

# EVA-LAST®

INSPIRED BY NATURE, DESIGNED FOR LIFE.



## SUSTAINABLE BUILDING MATERIALS CATALOGUE



Intertek



[www.eva-last.co.il](http://www.eva-last.co.il)

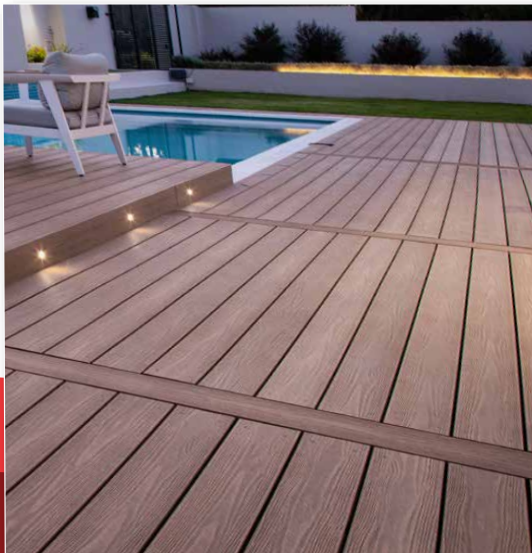


# INDEX

High quality, low-maintenance bamboo composite products, building systems, and deck fasteners.

## 08-27

---



## 28-30

---



### DECKING

Eva-Last composite decking is designed to make any outdoor area more beautiful and more enjoyable. Choose from our three specialised bamboo composite decking brands.

### CLADDING

VistaClad bamboo composite cladding breathes vibrancy into your home or office space and enhances your walls with the attractive look of natural hardwoods.

Disclaimer:

Although we make every effort to ensure the information contained in this catalogue is accurate, we are not responsible for any errors or misprint that occurs and we are not responsible for any damage or liability that result from the use (or misuse) of the information. In the event that an error does occur, we reserve the right to correct, or make changes to, this information at any time.

## 31-33



## 34-36



### ARCHITECTURAL BEAMS

Lifespan hybrid aluminium composite beams give you the creative freedom to build more memorable outdoor pergolas, screens, and other architectural design features.

### DECK FASTENERS

HULK Fasteners offer higher performance and are a more efficient and discreet way to secure your decking without disrupting its final look.

Disclaimer:

Span data provided herein is indicative based on specific test load conditions (refer to your product Technical Data Sheet). Dimensional and mass data provided herein is indicative based on typical production and may vary with manufacture and material tolerance. Before installing any Eva-Last product, ensure that the application is rational and complies with the local regulations and building codes. Wherever necessary, consult a suitably qualified professional.



## A BRAND YOU CAN TRUST

Eva-Last is a globally reputable brand that utilises a solution driven business model to create innovative, sustainable building materials and systems that add value to customers' lives. At the heart of Eva-Last is a team of highly capable, creative specialists united by a passion to promote environmental consciousness through eco-friendly building products and operations. By embracing low environmental impact manufacturing and cutting-edge composite technology, Eva-Last is revolutionising how building can be done. We design and deliver beautiful, long-lasting green alternatives that make our customers' lives easier, healthier, and just plain better.

## THE HASSLE-FREE ALTERNATIVE TO WOOD

Eva-Last composite offers the beauty of timber, but in a hassle-free, durable option that's longer lasting, virtually maintenance free, and eco-friendly. Cutting-edge engineering is bringing even greater structural advancements and lifestyle benefits to composite, and thoughtful detail to aesthetics now gives it an even more natural appearance in an expanded range of products, colours, and textures.

## PRODUCT CATEGORIES



**DECKING | CLADDING | ARCHITECTURAL BEAMS | DECKING FASTENERS**

Eva-Last technologies create endless possibilities for the design and overall function of your outdoor space. Visit our website, [www.eva-last.com](http://www.eva-last.com), for inspiration and find out more about which composite product will suit your needs best.



Featured: **Infinity IS, Swiss Oak**  
Single sided grooved and square edge decking by Eva-Last



## LOW ENVIRONMENTAL IMPACT

Holistically sustainable manufacturing & use of raw materials

When you choose Eva-Last, you're choosing the best solution for both you and the environment. Eva-Last products are the low-maintenance, reliable alternative to wood that consistently outperform timber and other composite materials. They're also the environmentally friendly material choice that is gentler on the Earth.



### BAMBOO WASTES LESS & PROVIDES MORE

Eva-Last uses bamboo in its composite production. Bamboo can grow up to 50 times faster than timber and releases 35 percent more oxygen into our air than most hardwood trees. It can be made into composite with only 2 percent wastage (compared to over 80 percent wastage with timber), and is naturally antibacterial.



### USE OF RECYCLED PLASTIC

By using recycled waste plastics, in combination with easily replenishable bamboo fibre, we are able to produce a highly durable composite product while saving millions of tons of plastic from entering landfills and oceans. Every year Eva-Last recycles over 26000 tons of plastic. Recycling one ton of plastic results in carbon dioxide savings of approximately 0.73 tons – the same as travelling 4 000 km in a car.

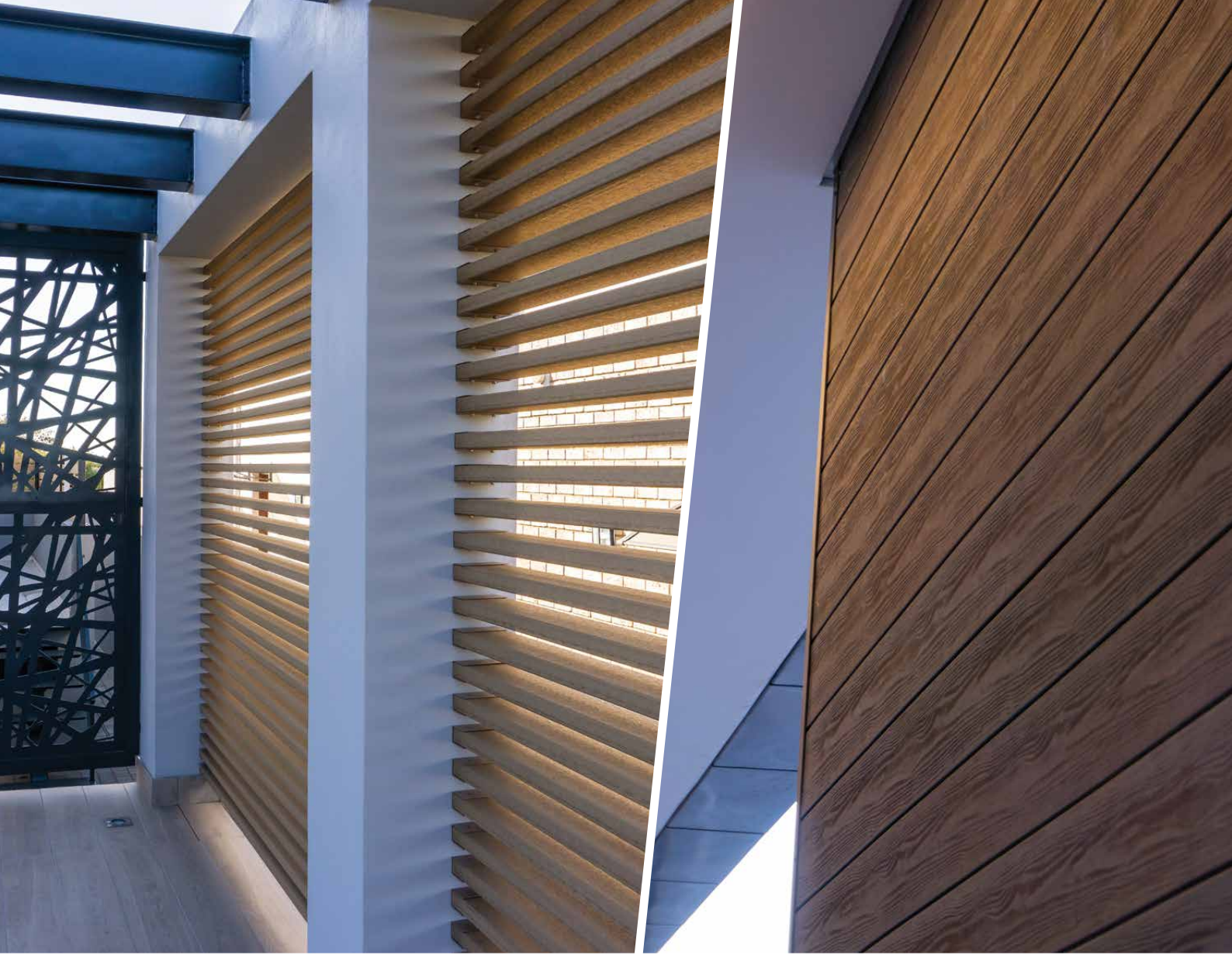


### USE OF SOLAR POWER IN THE MANUFACTURING PROCESS

Traditional manufacturing is an energy-intensive endeavour. That's why Eva-Last took the decision to start moving towards manufacturing using solar energy. Since 2017, 32 858 solar panels, or 88 716 m<sup>2</sup> of solar panels, have been installed. This leads to a saving of 2 000 tons of CO<sub>2</sub> every single day.

Eva-Last has been at the forefront of the green building industry since its inception in 2007. We are dedicated to consistently improving how we serve the environment and our clients. From the recycled and renewable raw ingredients we use to create our products, to the solar power we harness to manufacture, we are proud to offer holistically sustainable building products.

**Holistically sustainable building products, from a globally reputable brand**



Featured: **Apex PLUS, Himalayan Cedar**  
Single sided, reinforced grooved decking by Eva-Last

# TECHNOLOGIES

Eva-Last has developed a resilient collection of bamboo composite technologies, each with its own unique characteristics and set of benefits. These versatile materials can be used in a variety of applications such as decking, cladding, screening, as well as other architectural features.



## Apex<sup>®</sup> PLUS

### REINFORCED, CAPPED BAMBOO-PVC COMPOSITE

Apex boasts a glass fiber-reinforced bamboo-PVC core and an exceptionally natural looking dual-tone finish.



## Infinity<sup>®</sup> IS

### LIGHTWEIGHT CAPPED BAMBOO COMPOSITE

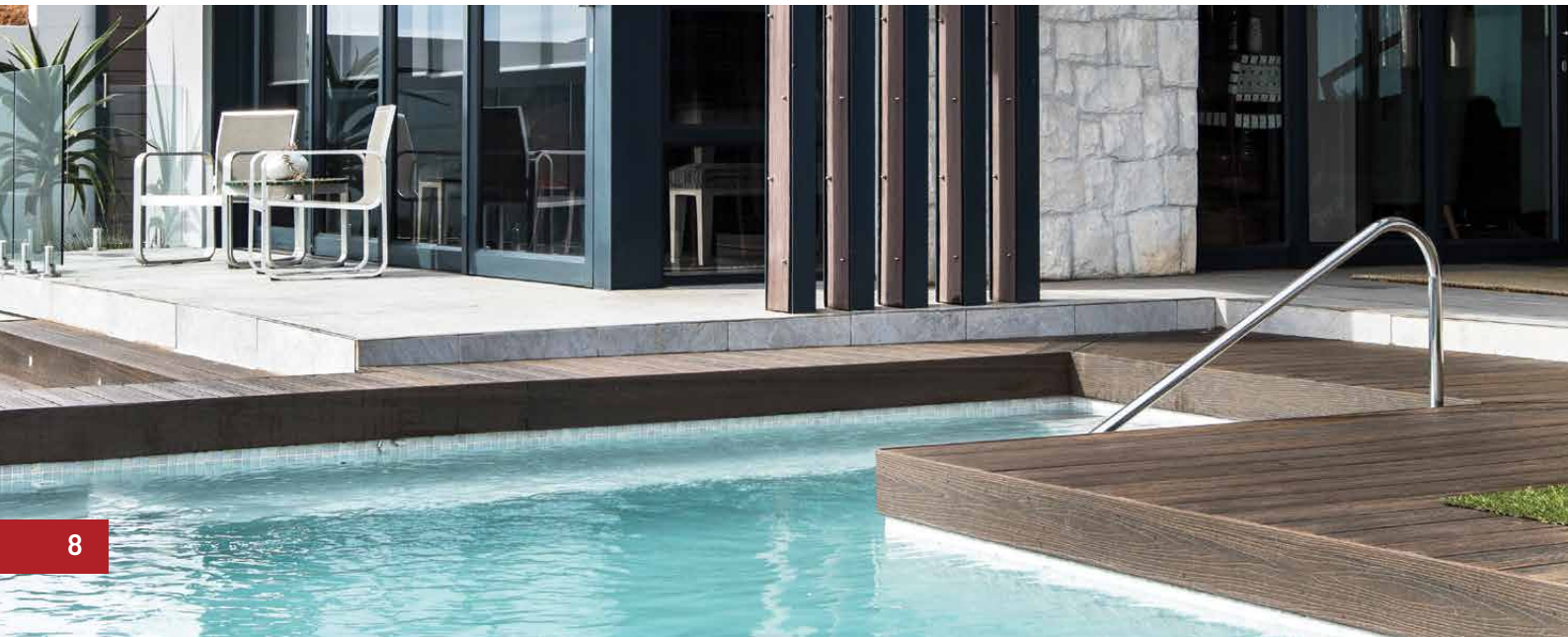
Infinity IS leads the market in durability with a resilient polymer capping, and I-beam shaped bamboo composite core.



## Eva-tech<sup>®</sup> IS

### LIGHTWEIGHT BAMBOO COMPOSITE

Eva-tech IS, is an enhanced composite that elevates the functionality and beauty of your outdoor space at a more affordable price.





# EVA-LAST®

BAMBOO COMPOSITE DECKING



Featured: Infinity IS, Caribbean Coral  
Single sided grooved and square edge decking by Eva-Last

# BAMBOO COMPOSITE DECKING

# Apex<sup>®</sup> PLUS

## REINFORCED, CAPPED BAMBOO-PVC COMPOSITE

Apex PLUS takes the benefits of Apex composite to the next level. It offers the renowned natural look of Apex in the most cutting-edge composite technology. Its improved bamboo foamed-PVC and glass fiber-reinforced core creates an even more durable and versatile board with increased span capabilities and greater stability. This eco-friendly and slip resistant composite is low maintenance and faces Mother Nature's toughest conditions with reliable long-term performance and timeless style.

### PRODUCT COMPOSITION

## Apex<sup>®</sup> PLUS

Apex PLUS upgrades your outdoor space with a cutting-edge composition that is equally beautiful and resilient. Its reinforced core gives you greater design freedom by reducing the amount of substructure your project needs and its specialised composition minimises contraction and expansion for a more stable board.



#### Capping material:

Engineered acrylic polymer

#### Core material:

Bamboo foamed-PVC composite  
with glass fiber-reinforcement



FSC certified bamboo composite product

**GFR** | GLASS FIBER  
REINFORCED





## TAKE HOME THE BENEFITS



### INCREASED SPAN

Reinforcement improves strength & span capability



### MORE STABLE

Less movement from expansion & contraction



### NATURAL AESTHETIC

Sets the standard for natural looking composite



### SLIP RESISTANT

Reliable slip resistance properties



### LOW-MAINTENANCE

Only basic care required for optimal longevity



### PROTECTIVE CAP

Fade, scratch, & stain resistant capping technology



### DECAY RESISTANT

Resists insects, moisture, & weather



### ECO-FRIENDLY

Sustainable manufacturing & use of raw material

## REINFORCED, CAPPED BAMBOO-PVC COMPOSITE DECKING



**145 x 21 mm**  
Grooved both sides



Sculpted Grain

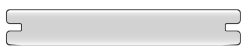
**GFR** / GLASS FIBER REINFORCED

### GROOVED BOARD

The Apex PLUS single sided grooved board in bamboo-foamed PVC with a glass fiber-reinforced core offers a flawless, fastener-free final look thanks to the grooves along its edges which are designed for streamlined installation using HULK hidden fastener clips.

Dimensions	145 x 21 mm
Weight	2.7 kg / m
Recommended joist spacing	450 mm on centre

#### Grooved board



Chain collated clip

#### Grooved edge fasteners

Compatible with the hidden Chain collated clip and screw



**145 x 21 mm**  
Grooved one side



Sculpted Grain

**GFR** / GLASS FIBER REINFORCED

### STARTER BOARD

The Apex PLUS single sided starter board is reinforced and is designed for use as decking and stair edges. Install using HULK hidden fastener clips on grooved edges and HULK colour matching top fixing screws on the boards square edges.

Dimensions	145 x 21 mm
Weight	2.8 kg / m
Recommended joist spacing	450 mm on centre

#### Starter board



#### Square edge fasteners

Uses HULK composite top fixing screws on non-grooved edges

#### Grooved edge fasteners

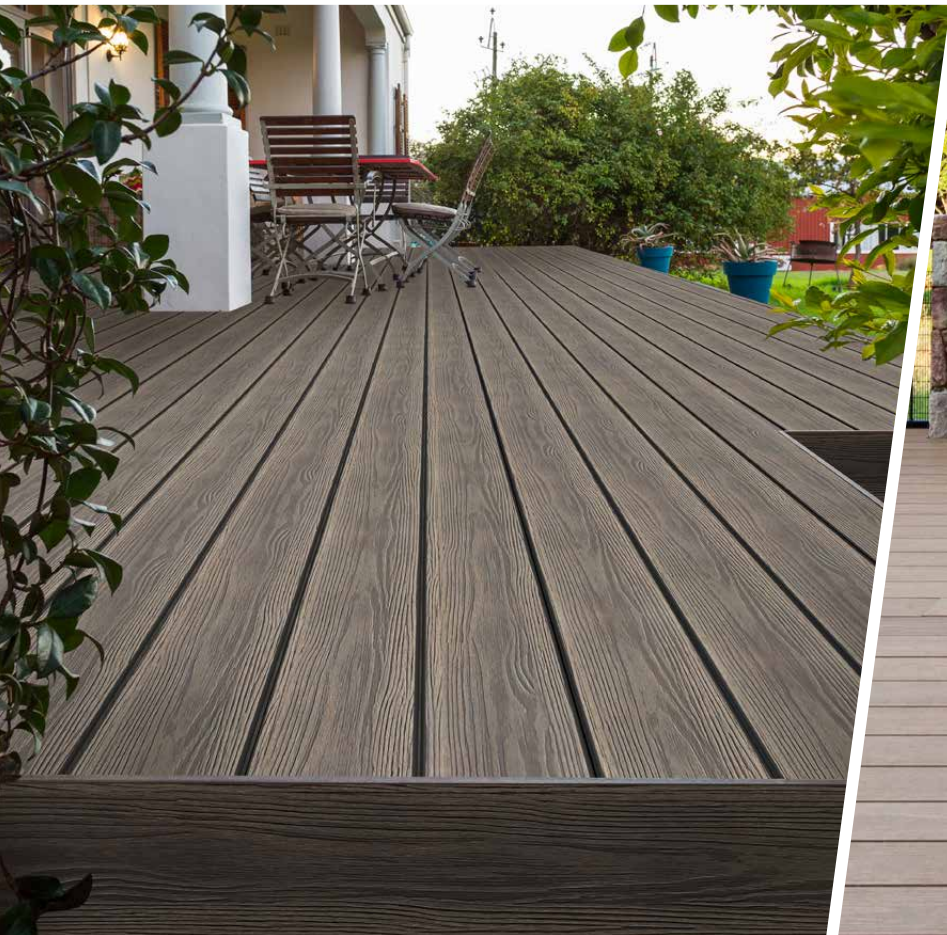
Compatible with the hidden Chain collated clip and screw



Chain collated clip



Featured: **Apex, Himalayan Cedar**  
Single sided grooved and square edge decking by Eva-Last





**Apex<sup>®</sup> PLUS**

## **APEX PLUS DUAL TONE COLOUR**

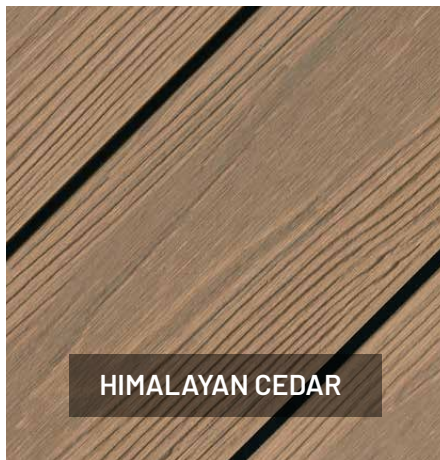
Apex PLUS dual tone colour range adds an extra layer of colour to each board to enhance the natural look of the composite boards. The variance in shades within a single composite profile beautifully showcases the colour tones found in timber, making your composite all the more striking.



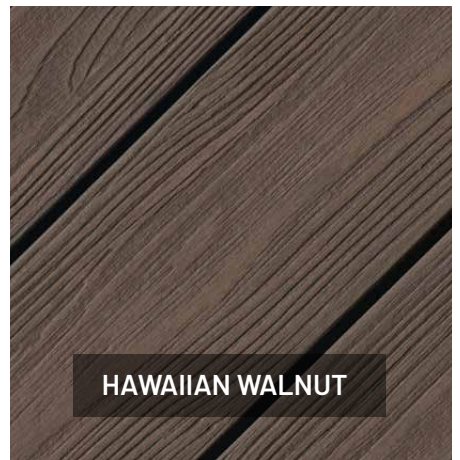
**SURFACE FINISH**  
Sculpted Grain



**BRAZILIAN TEAK**



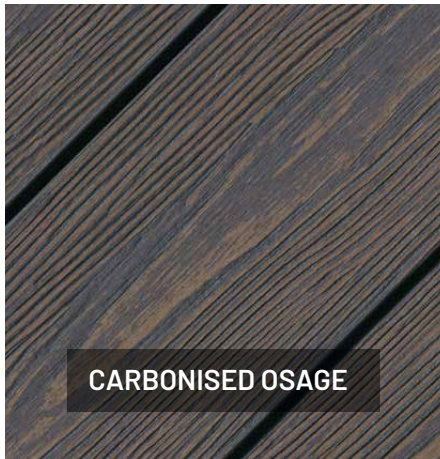
**HIMALAYAN CEDAR**



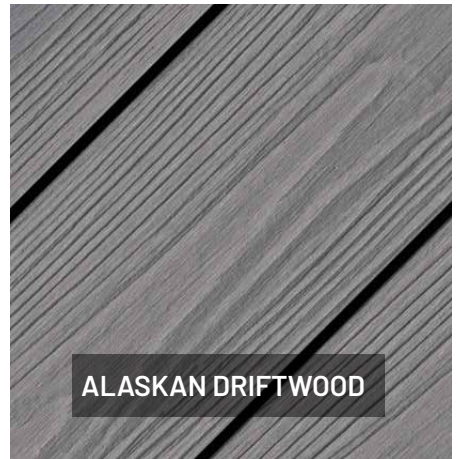
**HAWAIIAN WALNUT**



**ISLAND MAHOGANY**



**CARBONISED OSAGE**



**ALASKAN DRIFTWOOD**

**Note:** To find out about colour availability, please speak to your local agent.

# Infinity<sup>®</sup> IS

## LIGHTWEIGHT, CAPPED BAMBOO COMPOSITE

Infinity IS combines all the benefits of durable Infinity bamboo composite with the advantages of I-Series to give you a durable co-extruded composite offering low maintenance, and an advanced resilient polymer cap for protection against scratches, fading, moisture issues, decay, and weather, as well as stain and slip resistance. With Infinity IS specialised streaked colour variation technology you can enjoy the look of timber in an environmentally friendly bamboo composite. The revolutionary I-beam design creates a cost-effective, lightweight board that uses less material, yet maintains span capabilities, strength, and stiffness for a more efficient installation. This improved environmentally friendly composite is holistically sustainable from its manufacturing to its use of raw material.

## PRODUCT COMPOSITION

Infinity IS bamboo composite decking adds value and good looks to your outdoor space and to your lifestyle by giving you steadfast decking that lasts for decades.



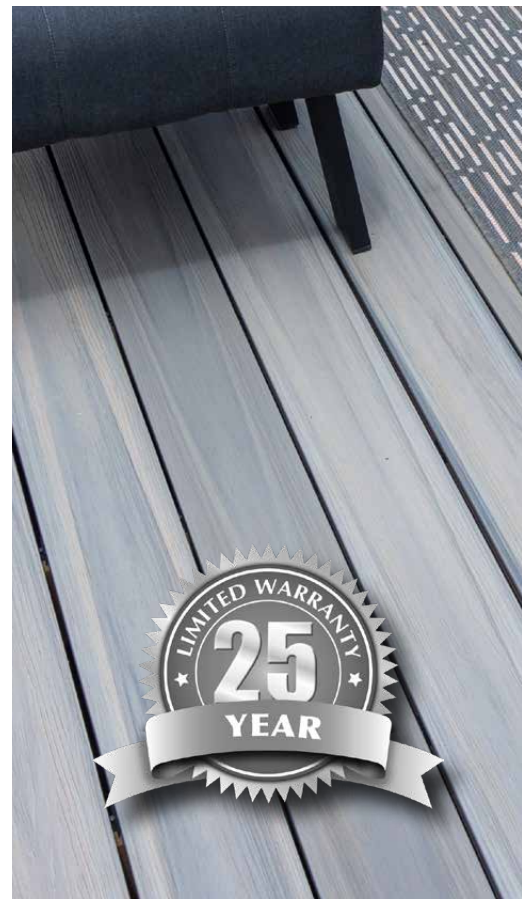
**(P) PATENTED TECHNOLOGY**

**Capping material:**  
Engineered polymer

**Core material:**  
Bamboo PE composite



FSC certified bamboo composite product







## TAKE HOME THE BENEFITS



### DURABLE

One of the toughest co-extruded composites



### PROTECTIVE CAP

Fade, scratch, & stain resistant capping technology



### LOW-MAINTENANCE

Only basic care required for optimal longevity



### DECAY RESISTANT

Resists insects, moisture, & weather



### STAIN RESISTANT

Built-in protection against stains



### SLIP RESISTANT

Reliable anti-slip protection



### NATURAL LOOK

Specialised streaked colour technology



### ECO-FRIENDLY

Sustainable manufacturing & use of raw material

## INFINITY IS ADDED BENEFITS



### COST-EFFECTIVE

Smart shape saves on transport & installation



### LIGHTWEIGHT

I-beam design is lighter by using less material



### SPAN

Span capability of heavier boards



### INSTALLATION

Easier and more efficient installation

## LIGHTWEIGHT, CAPPED BAMBOO COMPOSITE DECKING



**135 x 25.4 mm**  
I-Series profile



Sculpted Grain



**135 x 25.4 mm**  
I-Series profile



Sculpted Grain

### GROOVED BOARD

The Infinity IS single sided grooved board installs efficiently and securely with HULK hidden fastener clips which slot into the grooves along the edges of the board and create a neat uninterrupted final look.

Dimensions	135 x 25.4 mm
Weight	2.8 kg / m
Recommended joist spacing	400 mm on centre

#### Grooved board



Chain collated clip

#### Grooved edge fasteners

Compatible with the hidden Chain collated clip and screw

### STARTER DECK BOARD

The Infinity IS single sided starter deck board offers one grooved edge and one solid edge, making it perfect for deck perimeters, picture framing decks, and creating stair edges. It fastens with a combination of HULK hidden fasteners and colour matched HULK composite decking screws.

Dimensions	135 x 25.4 mm
Weight	2.7 kg / m
Recommended joist spacing	400 mm on centre

#### Starter board



#### Square edge fasteners

Uses HULK composite top fixing screws on non-grooved edges

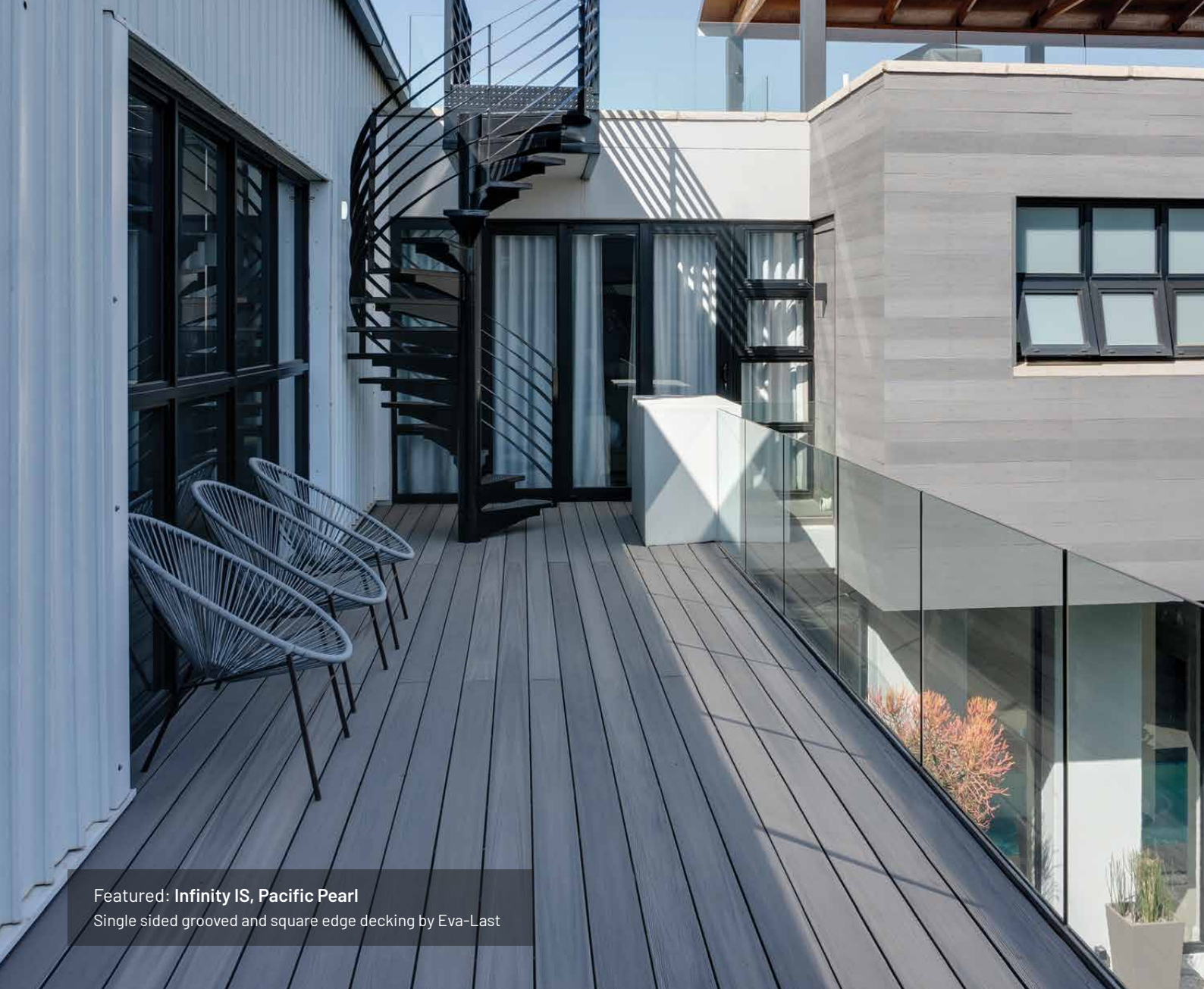
#### Grooved edge fasteners

Compatible with the hidden Chain collated clip and screw

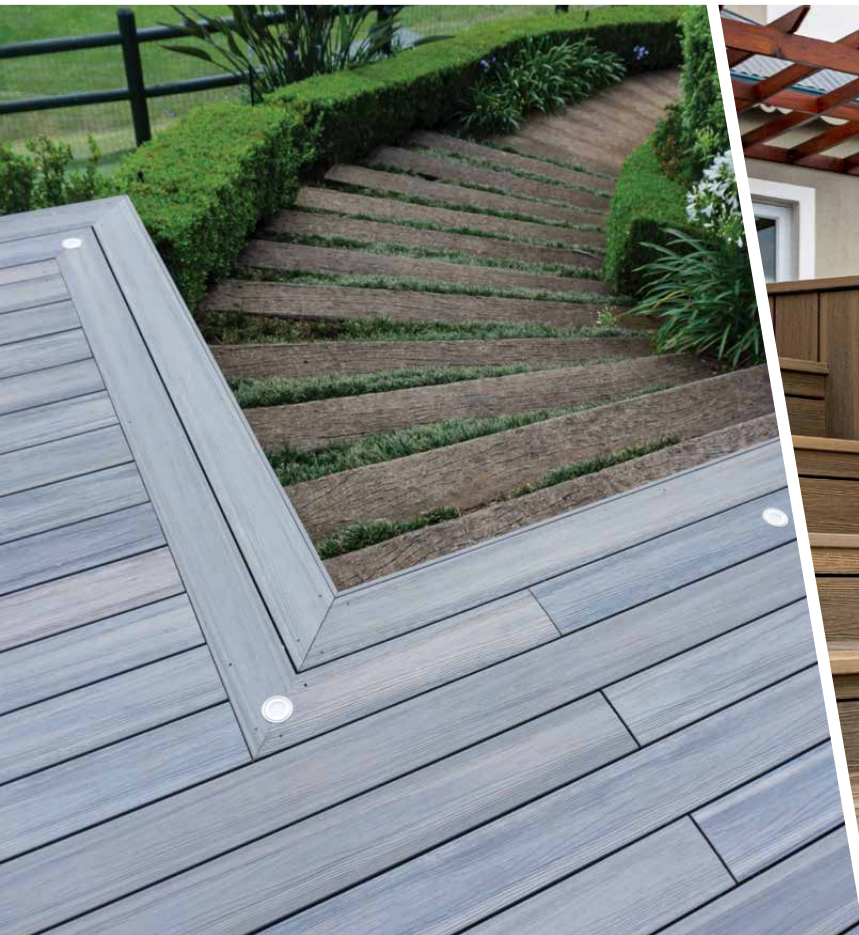


Chain collated clip

Infinity<sup>®</sup> IS profiles are available in various lengths. To find out which lengths are available in your region, please visit your local Eva-Last website. Please refer to the Infinity colours page to see our full colour range.



Featured: **Infinity IS, Pacific Pearl**  
Single sided grooved and square edge decking by Eva-Last





***Infinity***<sup>®</sup> **IS**

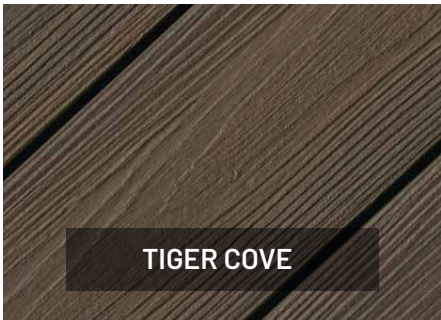
## INFINITY FINISH & COLOUR GUIDE

Infinity composite offers incredibly natural-looking colours thanks to its advanced colour technology which gives each board unique colour variation to embody the essence of timber. Enjoy the beauty of wood with the benefits of composite. Whether you choose to use it as decking, cladding, screening, or in other imaginative ways, Infinity complements your style and provides the perfect finish for your space.

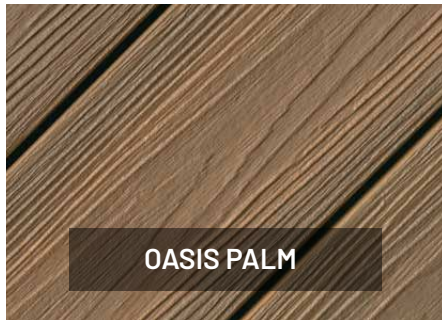
### SURFACE FINISHES



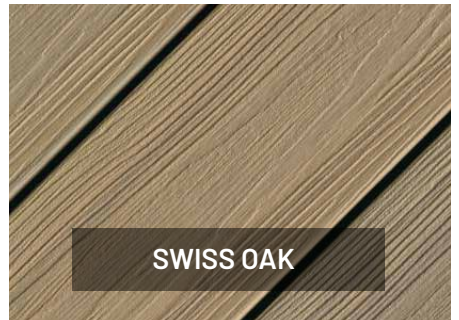
Sculpted Grain



TIGER COVE



OASIS PALM



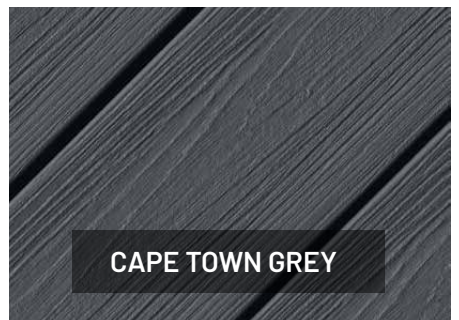
SWISS OAK



SPANISH SAFFRON



CARIBBEAN CORAL



CAPE TOWN GREY

**Note:** To find out about colour availability, please speak to your local agent.



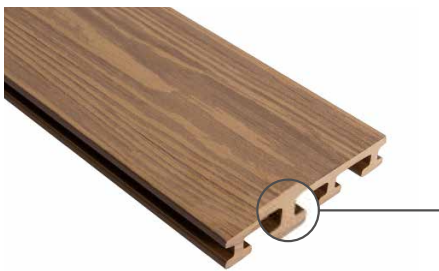
## LIGHTWEIGHT BAMBOO COMPOSITE

Eva-tech IS combines all the benefits of Eva-tech bamboo composite with the advantages of I-Series to give you a cost-effective bamboo composite, offering slip resistance, low maintenance, reliable durability, and decay and weather resistance, as well as environmental benefits. The smart I-beam design creates a lightweight board that uses less material to save on transportation, substructure, and labour, yet maintains span capabilities and allows for more efficient installation.



### PRODUCT COMPOSITION

Eva-tech IS invites you to let your imagination soar when it comes to your outdoor space by offering high quality bamboo composite in an optimised design that's more versatile and more cost-effective.



**(P)** PATENTED TECHNOLOGY

**Core & surface material:**

Bamboo PE composite



FSC® certified bamboo composite product





## TAKE HOME THE BENEFITS



### COST-EFFECTIVE

Cost-effective bamboo composite material



### SLIP RESISTANT

Reliable anti-slip protection



### LOW-MAINTENANCE

Only basic care required for optimal longevity



### DURABLE

Long-lasting & reliable



### DECAY RESISTANT

Resists insects, moisture, & weather



### ECO-FRIENDLY

Sustainable manufacturing & use of raw material

## EVA-TECH IS ADDED BENEFITS



### COST-EFFECTIVE

Smart shape saves on transport & installation



### LIGHTWEIGHT

I-beam design is lighter by using less material



### SPAN

Span capability of heavier boards



### INSTALLATION

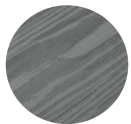
Easier and more efficient installation



## LIGHTWEIGHT BAMBOO COMPOSITE DECKING



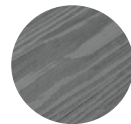
**139 x 23.4 mm**  
I-Series profile



Dual Tone



**139 x 23.4 mm**  
I-Series profile



Dual Tone

### GROOVED BOARD

The Eva-tech IS single sided grooved board installs efficiently and securely with HULK hidden fastener clips. This I-Series profile offers a more beautiful composite finish with enhanced dual tone colour for the look of natural timber.

Dimensions	139 x 23.4 mm
Weight	2.4 kg / m
Recommended joist spacing	350 mm on centre

#### Grooved board



Chain collated clip

#### Grooved edge fasteners

Compatible with the hidden Chain collated clip and screw

### STARTER BOARD

The Eva-tech IS single sided starter board offers one grooved edge and one solid edge, making it perfect for deck perimeters and stairs. This dual tone board fastens with a combination of HULK hidden fasteners and colour matched HULK composite decking screws.

Dimensions	139 x 23.4 mm
Weight	2.8 kg / m
Recommended joist spacing	350 mm on centre

#### Starter board



#### Square edge fasteners

Uses HULK composite top fixing screws on non-grooved edges



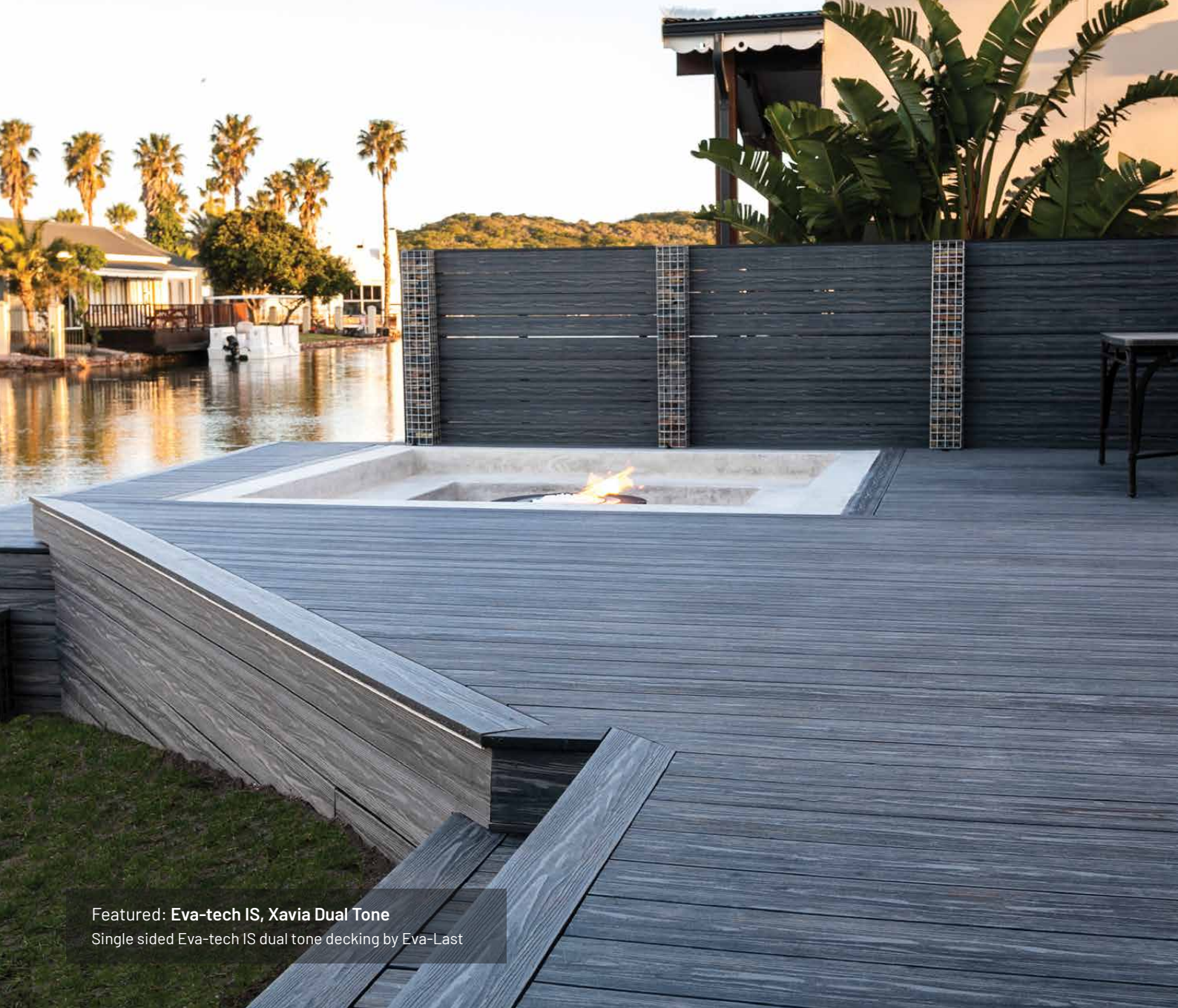
Chain collated clip

#### Grooved edge fasteners

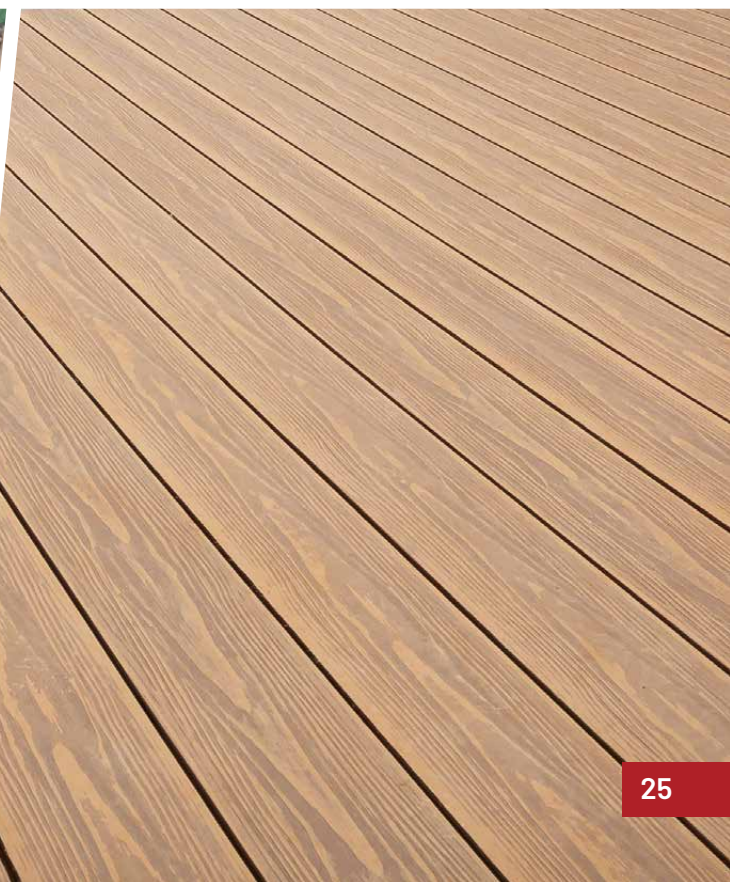
Compatible with the hidden Chain collated clip and screw

Eva-tech IS profiles are available in various lengths. To find out which lengths are available in your region, please visit your local Eva-Last website. Please refer to the Eva-tech colours page to see our full colour range.





Featured: **Eva-tech IS, Xavia Dual Tone**  
Single sided Eva-tech IS dual tone decking by Eva-Last



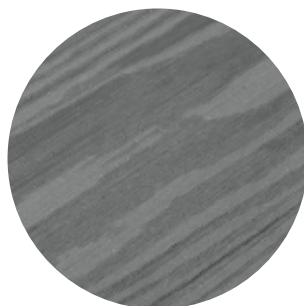


**eva-tech**<sup>®</sup> **IS**

## EVA-TECH FINISH & COLOUR GUIDE

The new Eva-tech dual tone colour range adds an extra level of colour technology to each of the four classic Eva-tech colours to provide an even more natural-looking composite in an artfully designed surface finish which embodies the look of real wood. Enjoy Eva-tech bamboo composite in this advanced dual tone aesthetic.

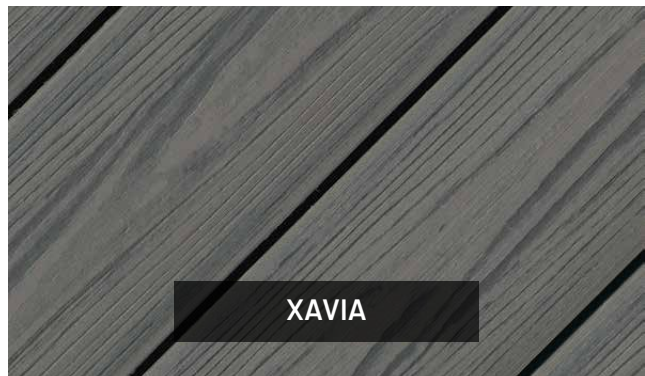
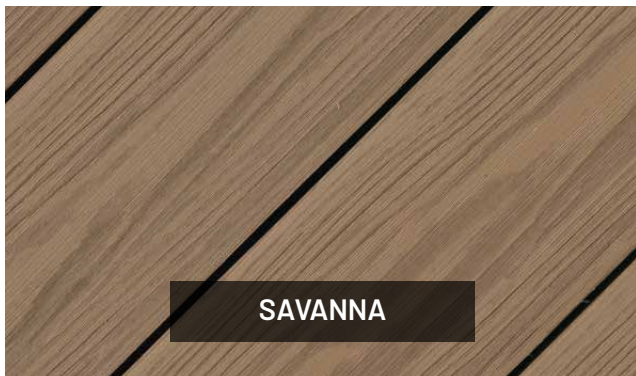
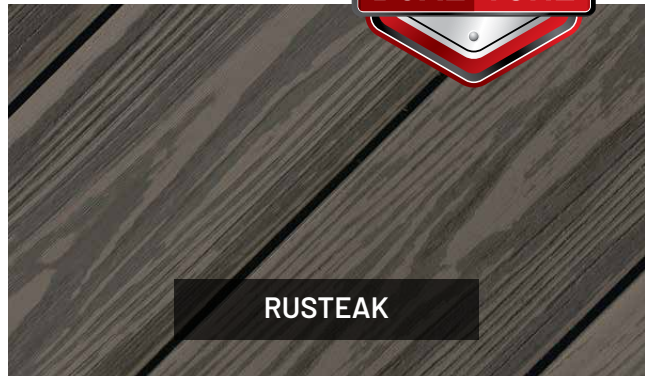
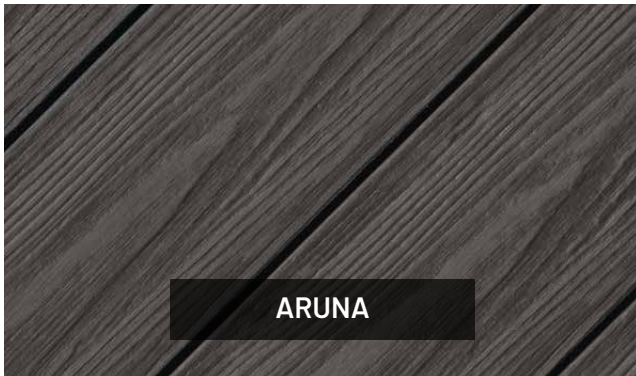
### SURFACE FINISHES



Dual Tone



## DUAL TONE FINISH



**Note:** To find out about colour availability, please speak to your local agent.

## ADVANCED BAMBOO COMPOSITE CLADDING

The VistaClad lightweight bamboo composite cladding system is revolutionising how cladding works with an innovative clip strip which locks boards into place using reliable dual spring technology. VistaClad is available in a range of colours and finishes, with trim and accessories, as a complete cladding system, designed for ease of installation. Backed by an industry-leading warranty, this low-maintenance, weather-resistant cladding is a smart, cost-efficient investment in your project, and a sustainable investment in our planet.

### VISTA CLAD SYSTEM COMPONENTS

The VistaClad system combines Eva-Last composite technologies with an innovative installation process to provide a robust and convenient cladding solution. The resultant hidden fixing generates an unblemished finish and avoids the limitations or inconvenience of fastening through composite.



Composite Cladding Boards



Clip Strip



Adapters & Trim Profiles

### CUTTING-EDGE SUSTAINABLE CLADDING

VistaClad bamboo composite cladding breathes vibrancy into your home or office space and enhances your walls with the attractive look of hardwoods. Let routine maintenance and premature replacement be things of the past as you look to the future with one of the most cutting-edge, and durable cladding products available. The range is available in a selection of natural-looking colours and comes with a complementary trim solution for a neat and tidy finish, making VistaClad a complete cladding system.

**AVAILABLE ON SPECIAL ORDER**

Find out more on [www.eva-last.com](http://www.eva-last.com)



## TAKE HOME THE BENEFITS



### CLIP LOCK DESIGN

Boards securely click & lock into place to withstand strong winds



### LOW-MAINTENANCE

Ideal for large-scale projects & application at height



### COMPLETE CLADDING SOLUTION

Innovative system with concealed fastening & trim for a finished look



### DECAY RESISTANT

Resists biodegradation, corrosion, insects, UV, & harsh weather



### LIGHTWEIGHT

Smart system engineered for lighter weight & better air flow



### COST-EFFECTIVE SYSTEM

Save on fast, simplified installation & overall upkeep



### VENTILATED & INSULATED

Design allows for system ventilation & natural insulation



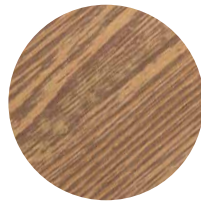
### ECO-FRIENDLY

Sustainable manufacturing & use of raw materials



## BAMBOO COMPOSITE PROFILES

VistaClad boards are lightweight, and are available in Apex and Infinity bamboo composite material technologies, designed for long-lasting weather resistance, including protection against insects, moisture, and fade. The tongue and groove profile design interlocks the boards, suppling system tolerance whilst improving load distribution and reduction of moisture ingress.

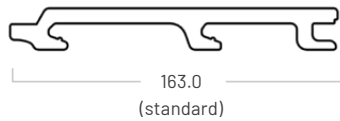


**Apex**<sup>®</sup>



APEX BAMBOO-PVC CLADDING

Standard size



Product description	Dimensions	Coverage	Mass
Standard (Apex)	163 x 20.5 mm	6.6 m <sup>2</sup>	1.5 kg/m

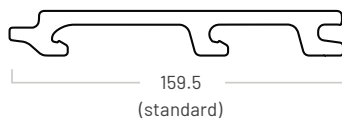


**Infinity**<sup>®</sup>



INFINITY BAMBOO COMPOSITE CLADDING

Standard size  
(New profile)

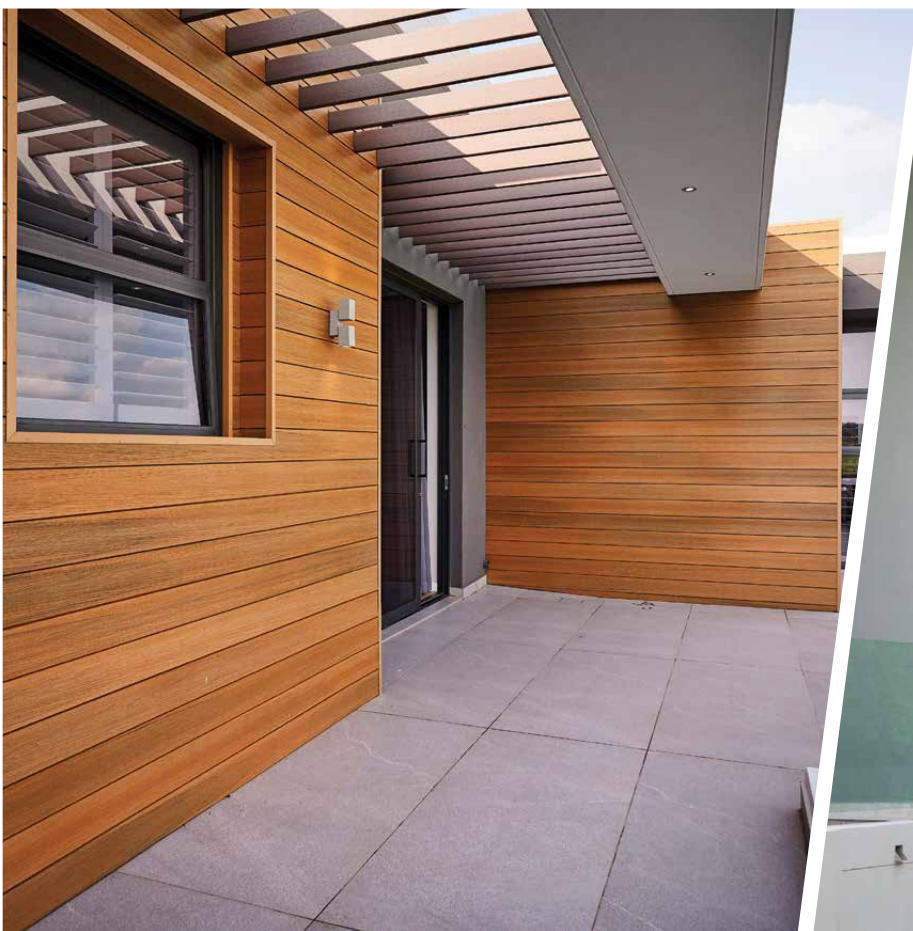


Product description	Dimensions	Coverage width	Mass
Standard (Infinity)	159.5 x 22.5 mm	6.6 m <sup>2</sup>	2.3 kg/m

**AVAILABLE ON SPECIAL ORDER**

Find out more on [www.eva-last.com](http://www.eva-last.com)

Featured: VistaClad, Infinity, Tiger Cove  
VistaClad cladding system by Eva-Last



# LIFESPAN™

COMPOSITE ARCHITECTURAL BEAMS

## TRI-EXTRUDED ALUMINIUM BAMBOO COMPOSITE

Lifespan hybrid aluminium composite beams give you the creative freedom to build more memorable outdoor architectural designs. These multipurpose beams have the functionality, resiliency, and beauty to make your project remarkable. Whether you choose to use Lifespan beams for pergolas, entryways, dramatic screening, or your own creative architectural vision, revel in the feeling of building something truly innovative.



## HIGH PERFORMANCE FOR HIGH EXPECTATIONS

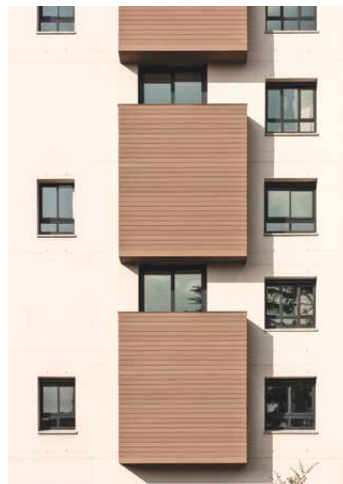
Lifespan beams add style and functionality in a diverse range of applications. Enjoy the shade and privacy of a pergola or screen, or enhance the appeal of your home exterior with beams that give the look of wood without the maintenance hassles. The versatility of Lifespan decorative architectural beams is matched only by their beauty.



PERGOLAS



PRIVACY SCREENS



CLADDING & SOFFITS



DECORATIVE ARCHITECTURE



**AVAILABLE ON SPECIAL ORDER**

Find out more on [www.eva-last.com](http://www.eva-last.com)

For more information on Lifespan visit [www.eva-last.com](http://www.eva-last.com)



## TAKE HOME THE BENEFITS



### DESIGN VERSATILITY

Architectural beams offer a diverse range of aesthetic applications



### LIGHTWEIGHT DESIGN

Specialised aluminium core for easier installation at height



### LOW-MAINTENANCE

The look of timber beams without the upkeep



### INCREASED SPAN

Reinforced bamboo composite beam with built-in aluminium core



### DECAY & WEATHER RESISTANT

Resists biodegradation, corrosion, insects, & harsh weather



### FADE RESISTANT

Built-in UV protection for beautiful durability



# LIFESPAN™

COMPOSITE ARCHITECTURAL BEAMS

## REINFORCED MODULAR COMPOSITE

Lifespan architectural beams offer design versatility and increased span thanks to their specialised aluminium core that makes for easier installation at height. The outer coating of low-maintenance bamboo composite resists biodegradation, corrosion, insects, and harsh weather, and offers built-in UV protection for beautiful durability. Enjoy the look of timber beams without the upkeep.

### HYBRID ALUMINIUM BAMBOO COMPOSITE BEAM

- 1 Aluminium core
- 2 Engineered flexible adhesive
- 3 Outer protective composite coating (Eva-tech surface technology)



## INCREASED SPAN

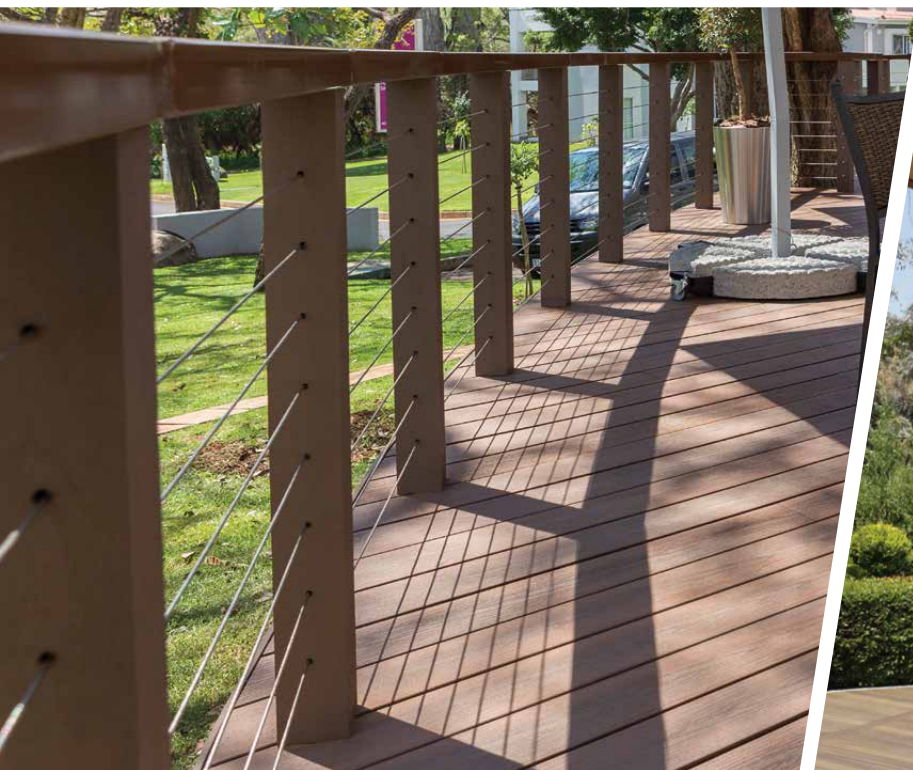
Lifespan architectural beams offer the span capability of much heavier, solid beams thanks to their built-in aluminium core. This core significantly enhances the dimensional and flexural stability of the beam, while the Eva-tech bamboo composite coating provides a realistic timber aesthetic, as well as resistance to severe climatic and biodeterioration conditions.

**AVAILABLE ON SPECIAL ORDER**

Find out more on [www.eva-last.com](http://www.eva-last.com)



Featured: Lifespan, Eva-tech Xavia  
Decorative pergola and posts by Eva-Last



## RELIABLE DECKING FASTENER SYSTEMS

HULK Fasteners are purposefully designed to make composite or timber decking installations more efficient and straightforward by providing highly durable hidden fastener options that fit neatly into the edges of grooved boards, as well as a range of colour matching top fixing screws. These fasteners are created to match the warranties of the leading composite decking boards on the market, and are available in a range of colours to complement the look of your decking of choice.



### DESIGNED FOR PROFESSIONALS. PERFECT FOR NOVICES.

HULK Fasteners offer higher performance and are a more efficient and discreet way to secure your decking without disrupting its final look.

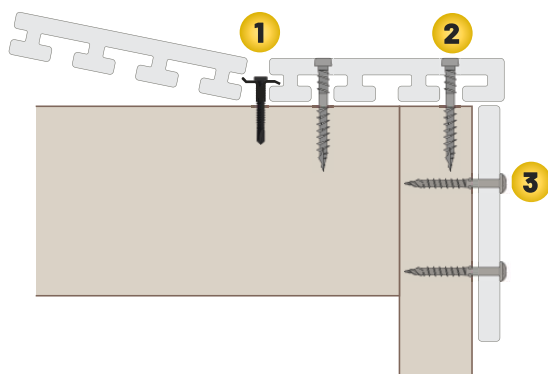
#### HULK Fasteners hidden clips

Eva-Last exclusively recommends HULK Fasteners to provide the strongest and most durable fix for composite decking and trim products. HULK Chain collated clips are used to install decking boards with grooved edges and provide a neat finish and faster installation.



#### HULK composite top fixing screws

Colour matching composite decking screws are used for top fixing non-grooved and fascia or deck trim profiles to metal or timber frames, providing an invisible finish.



- 1** Hidden Clip & Clip Screw
- 2** Composite Decking Screw (CDS) for timber frames or Metal Decking Screw (MDS) for metal frames
- 3** Composite Trim Screw for timber frames or Metal Trim Screw for metal frames



For more information on HULK Fasteners visit [www.eva-last.com](http://www.eva-last.com)



## FASTENED. FOR LIFE.



Corrosion  
Resistant



Colour Matched  
Aesthetic



Neat Surface  
Finish



Fast and Easy  
Installation



No Pre-drilling  
Required

**chain**™  
*Collated decking clip*

## UNIVERSAL COLLATED HIDDEN DECK FASTENER

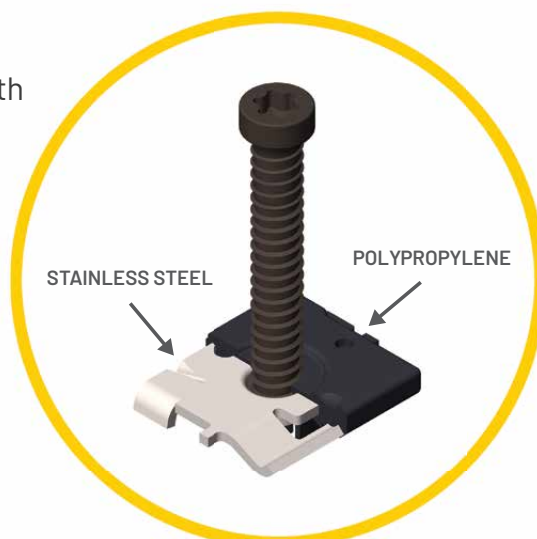
Chain collated clips are innovatively engineered to work with composite or timber boards of varying thickness and with timber or metal frames for a more cost-effective and efficient installation. Chain offers superior durability and strength, a discreet appearance, and easier post-installation access and board removal.

A PRODUCT BY  **HULK FASTENERS.**™

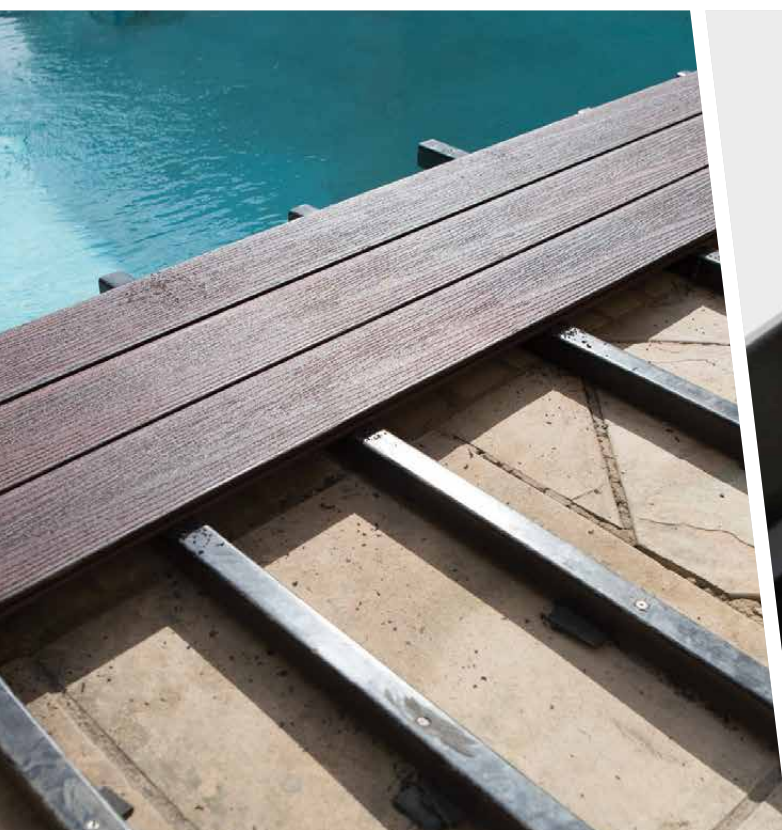
## GET THE JOB DONE FASTER.

Chain collated clips save you time and money by streamlining installation with pre-loaded screws that offer cutting-edge performance for the entire lifespan of your deck. Enjoy a simpler installation and a more secure long-term fastener that complements the overall look of your deck.

Stainless steel clip with  
polymer coating



Pre-loaded with screw  
for ease of installation



## FEATURES AND BENEFITS



### MORE EFFICIENT INSTALLATION

Collated system comes pre-loaded with screws for quicker installation



### DURABLE

Stainless steel clip with a protective polymer coating for extended outdoor longevity



### INNOVATIVE ENGINEERING

Cost-effective use of materials without affecting grip strength or overall clip performance



### UNIVERSAL APPLICATION

Works with timber & composite boards of variable thickness & groove depths



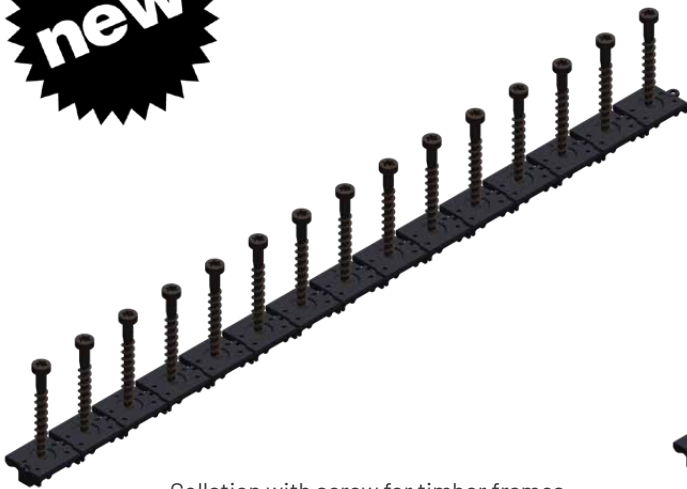
### STRENGTH IN SIZE

Proven strength in uplift holding power & preventing lateral movement of boards

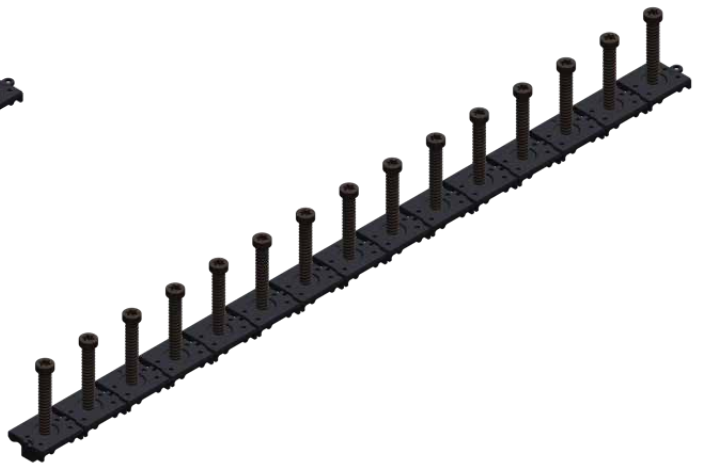


### EASIER POST-INSTALLATION ACCESS

More convenient post-installation board removal with direct overhead fastener access



Collation with screw for timber frames



Collation with screw for metal frames

## CHAIN COLLATED CLIPS

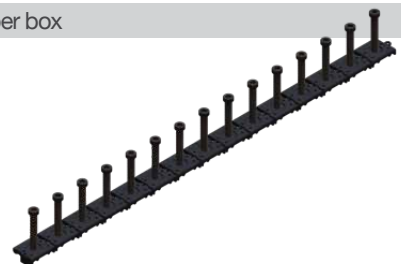
Chain collated clips offer a smarter solution for creating an outdoor oasis. By preloading high quality and durable screws into equally reliable clips. Chain collated clips make installation more efficient, and are suitable for use by professionals or novices. Like all Eva-Last products, Chain collated clips are built on the principle of longevity.

## CHAIN PACK



### 900 Chain COLLATED CLIPS

Six boxes in a pack; 150 clips per box

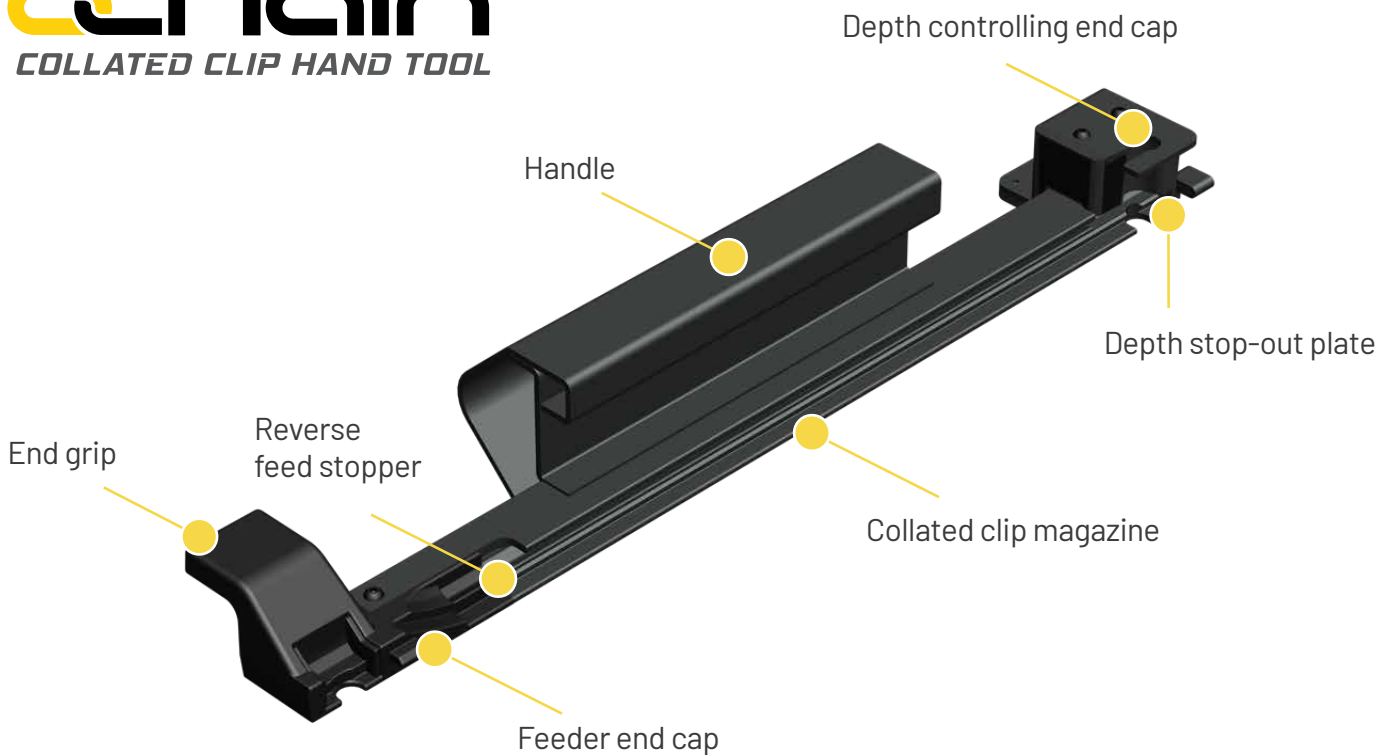






# chain™

COLLATED CLIP HAND TOOL



## CHAIN HAND TOOL

The Chain hand tool adds value to the Chain collated clip system by maximising installation efficiency. The hand tool creates precise fastening thanks to its built-in depth control system that eliminates installation errors and weak connections. The hand tool is compatible with a wide range of composite and timber board sizes, ergonomically designed for ease of use, and made from high quality materials for long-lasting reliability.

## EXPANSION KITS



### 1 Chain HAND TOOL

- 1 collated clip hand tool
- 1 T15 (50 mm) depth setting bit

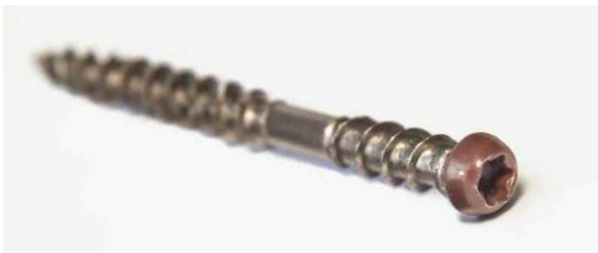




## COLOUR MATCHED COMPOSITE TOP FIXING SCREWS

HULK Fasteners composite deck and trim screws are available in nine different colours designed to match and blend in with decking boards from all leading composite decking manufacturers. Choose the colour that matches your decking boards for a discreet final look. Please check your regional availability of screw colours.

## COMPOSITE DECKING SCREWS (CDS)



Stainless steel: 316  
Available in dark brown, light brown, brown, tan brown, beige, dark grey and light grey

For fastening (top-fixing) composite boards to timber frames

## 75 COMPOSITE DECK SCREWS (for timber or metal frames)



### 75 Pack TOP FIXING SCREWS

75 carbon steel or stainless steel composite deck screws  
1 drill bit



*HULK Fasteners are recommended for use with all Eva-Last installations. HULK composite deck and trim screws are available for timber and metal frames.*



## CDS COLOURS

Stainless steel SS316



**DARK BROWN**



**BROWN**



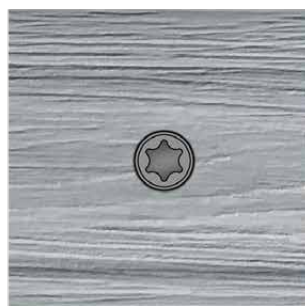
**LIGHT BROWN**



**TAN BROWN**



**BEIGE**



**LIGHT GREY**



**DARK GREY**





## LOW ENVIRONMENTAL IMPACT

Holistically sustainable manufacturing & use of raw materials

# CHOOSE SUSTAINABLE COMPOSITE



## RENEWABLE RESOURCES & RENEWABLE ENERGY

We believe that how we manufacture is just as important as what we manufacture when it comes to going green. That's why we've traded in fossil fuels for renewable energy. Our products use solar power as part of our manufacturing process. We are fully committed to bringing you a product that's holistically eco-conscious.

Every Eva-Last range pairs recycled raw ingredients with bamboo for a stronger, more sustainable composite. Bamboo rejuvenates over 30 times faster than traditional hardwoods and it releases 35% more oxygen into our air. Eva-Last is internationally recognised for our commitment to the environment. We're proud of the work we do to promote environmental sustainability, and invite you to choose timber alternatives that are gentle on the Earth.

- Made from recycled materials
- No trees felled
- No treatment or toxic chemicals required for maintenance
- Solar powered manufacturing processes
- Reduced impact on landfills (recyclable at the end of life)
- Reduced carbon footprint

**CARMEL**  
**BUSINESS**

Phone: 03 - 7524581

E-mail: [INFO@CARMELGROUP.CO.IL](mailto:INFO@CARMELGROUP.CO.IL)

Web: [www.eva-last.co.il](http://www.eva-last.co.il)

**EVA-LAST**<sup>®</sup>  
*INSPIRED BY NATURE, DESIGNED FOR LIFE.*



[www.eva-last.com](http://www.eva-last.com)

© 2022 Eva-Last reserves the rights to all brands, products, and trademarks within this publication.

Eva-Last ITEM: 8/22 PRODUCT CATALOGUE